

Examined and Approved
 July 6-1926
J. L. Hunter
 Deputy Auditor General

"SUNSHINE GARDENS SUBDIVISION" OF E. 1/2 OF W. 1/2 OF S.E. 1/4 SEC. 12, T. 4N, R. 3W, DELTA TWP. EATON CO., MICHIGAN

7/3/26

DESCRIPTION

The land embraced in the annexed plat of "SUNSHINE GARDENS SUBDIVISION" OF E. 1/2 OF W. 1/2 OF S.E. 1/4 SEC. 12, T. 4N, R. 3W, DELTA TWP. EATON CO., MICHIGAN may be described as follows:— Commencing at a point 50 ft North of the South 1/2 Post of S.E. 1/4 Sec. 12, T. 4N, R. 3W, thence North on 1/8 line 2549.0 ft, thence S. 89° 46' W. 660.0 ft, thence South 2548.0 ft, thence N. 89° 52' E. 660.0 ft to the place of beginning.

DEDICATION

Know All Men By These Presents, That we Charles L. Dunn as proprietor, and Mary L. Dunn his wife, have caused the land embraced in the annexed plat to be surveyed, laid out and platted, to be known as "SUNSHINE GARDENS SUBDIVISION" OF E. 1/2 OF W. 1/2 OF S.E. 1/4 SEC. 12, T. 4N, R. 3W, Delta Twp, Eaton Co, Michigan and that the streets and roads as shown on said plat are hereby dedicated to the public.

Signed and Sealed } *Charles L. Dunn* (L.S.)
 in Presence of } *Mary L. Dunn* (L.S.)
Lebe Leiman

STATE OF MICHIGAN } ss.
 COUNTY OF EATON }

On this 2nd day of July 1926 before me, a Notary Public in and for said county, personally came the above named Charles L. Dunn and Mary L. Dunn his wife, known to me to be the persons who executed the above dedication, and acknowledged the same to be their free act and deed.

Howard J. Brown Notary Public Eaton Co., Michigan
 My Commission expires July 14, 1926

CERTIFICATE OF MUNICIPAL APPROVAL

This plat was approved by the Township Board of the township of Delta at a meeting held July 1st 1926

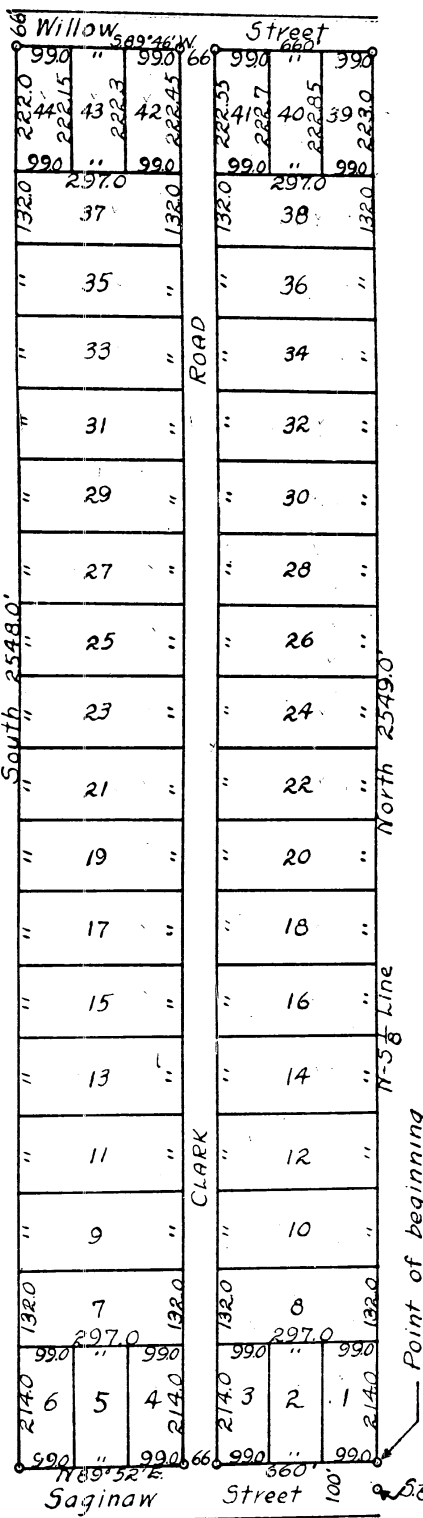
Howard J. Brown Township Clerk

CERTIFICATE OF APPROVAL BY COUNTY BOARD

This plat was approved on the 2nd day of July 1926

William R. Bayler Judge of Probate
Howard J. Brown County Clerk
Charles L. Skinner County Treasurer

FILED IN EATON CO. CLERK'S OFFICE
 July 20-1926
J. L. Hunter



SCALE 1"=200'

SURVEYOR'S CERTIFICATE

I hereby certify that the plat hereon delineated is a correct one and that permanent metal monuments of not less than one inch in diameter and fifteen inches in length set in a concrete base at least four inches in diameter and forty-eight inches in depth have been placed at points marked thus (o) as thereon shown at all angles in the boundaries of the land platted and at all intersections of streets and roads, and at intersections of streets and roads with the boundaries of the plat as shown on said plat.

A. N. Bateman
 Registered Surveyor
 7/2/26-# 550

COUNTY TREASURER'S CERTIFICATE

Office of County Treasurer, Eaton County
 I hereby certify, That there are no tax liens or titles held by the State on the lands described below, and that there are no tax liens or titles held by individuals on said lands, for the five years preceding the 2nd day of July 1926 and that the taxes for said period of five years are paid, as shown by the records of this office.

This certificate does not apply to taxes, if any, now in process of collection by township, city or village collecting officers.

Commencing at a point 50 ft. North of the South 1/2 Post of S.E. 1/4 Sec. 12, T. 4N, R. 3W, thence North on 1/8 line 2549.0 ft, thence S. 89° 46' W. 660.0 ft, thence South 2548.0 ft, thence N. 89° 52' E. 660.0 ft. to the place of beginning.

Charles L. Skinner
 County Treasurer

James L. Fiedler
 July 26 2
J. L. Hunter

FILED IN EATON CO. CLERK'S OFFICE
 July 6-1926
J. L. Hunter